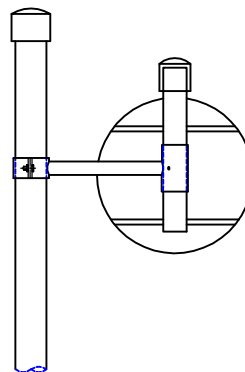
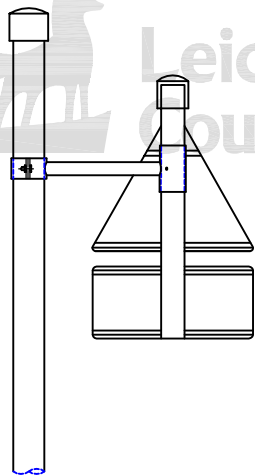
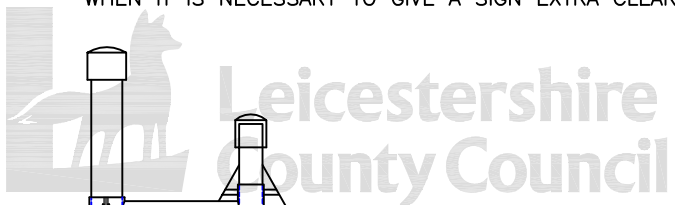


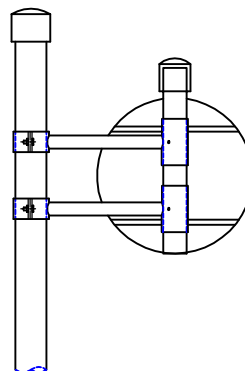
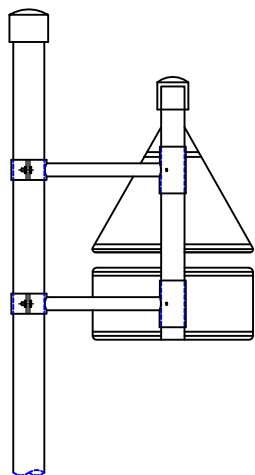
NOTES:

1. See Drg No [SD/12/22](#)
2. In exceptional circumstances signs of area less than 0.3 sq m may be attached via a single off-set bracket.

OFF-SET BRACKETS – USED WHEN YOU WANT TO BRING SIGNS NEARER THE CARRIAGEWAY OR WHEN IT IS NECESSARY TO GIVE A SIGN EXTRA CLEARANCE FROM THE EDGE OF CARRIAGEWAY



ALWAYS USE TWO OR MORE OFF-SET BRACKETS



©Crown copyright 2007. All rights reserved. Use of this image is limited to viewing on-line and printing one copy. Leicestershire County Council. 100019271.