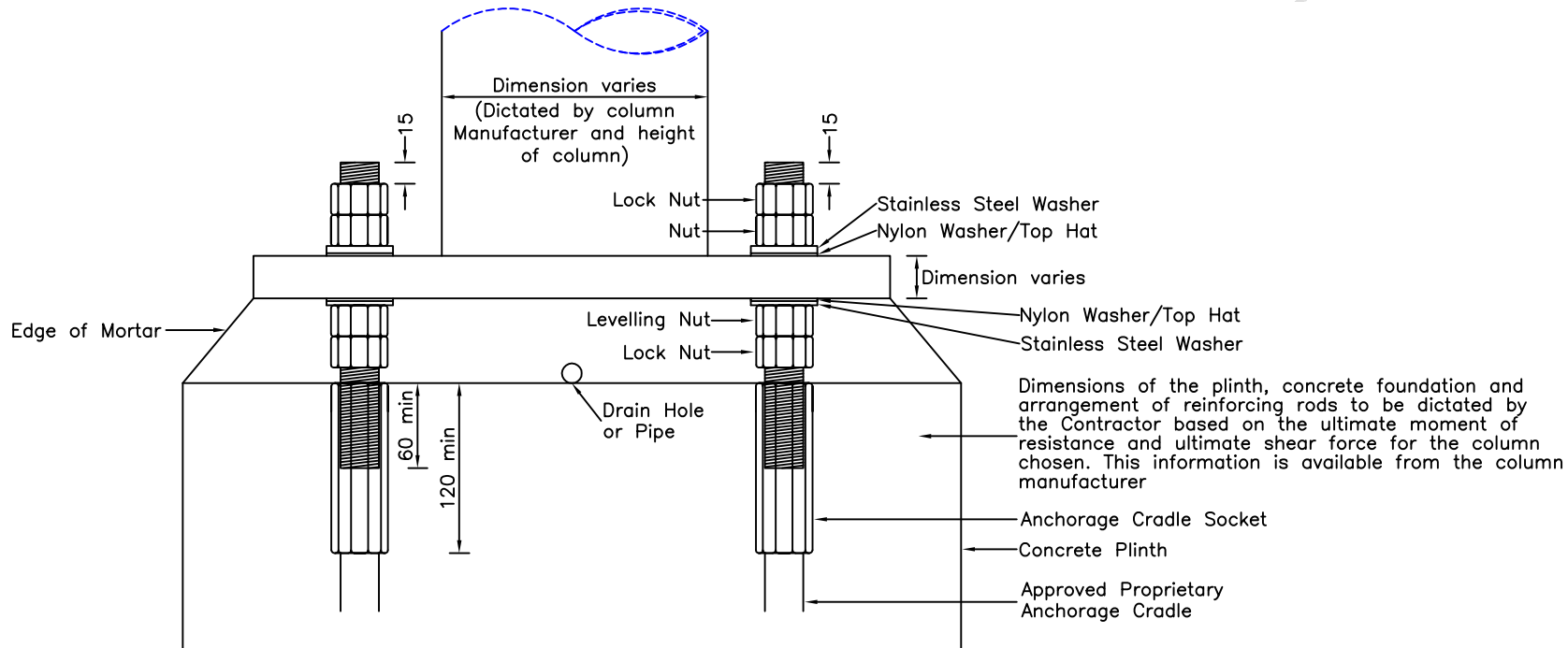




Leicestershire
County Council



NOTES:

1. All dimensions are in millimetres unless otherwise stated.
2. Thickness of the flange plate, dimension from centre of rod to centre of rod and the width of the plate to be dictated by the manufacturer of the chosen column.
3. Washers shall comply with BS4320 providing the hole or width of slotted hole in the column flange plate does not exceed the diameter of the holding down bolt plus 6mm. For circular holes washers shall not exceed the diameter of the holding down bolt plus 4mm. Where holes or slotted clearances are greater then this value should be given to the use of special plate washers.
4. Levelling nuts, holding down bolts, lock nuts and washers shall be stainless steel and of the same size above and below the flange plate.
5. The anchorage cradle sockets, threaded rod, washers and nuts shall be stainless steel. A nylon washer shall be fitted between the flange plate and any stainless steel element to prevent galvanic reaction.
6. Rod and bolt above flange plate shall be wrapped in Denzo tape. Area under flange plate shall be mortared up with an approved mix. A drain hole shall be installed on each side of the plate mortar.



Leicestershire
County Council

©Crown copyright 2007. All rights reserved. Use of this image is limited to viewing on-line and printing one copy. Leicestershire County Council, 100019271.

<p>DEPARTMENT OF HIGHWAYS TRANSPORTATION AND WASTE MANAGEMENT</p>	<p>TITLE:</p> <p>STANDARD DRAWING</p> <p>FLANGED BASED COLUMN - GENERAL ARRANGEMENT</p>	<p>STREET LIGHTING</p>	DRAWING NUMBER	DATE			
			SD/13/2	APRIL 2007			
			AUTOCAD REF	SCALE			
			K:\GENERAL\ID9997STDDRG\SD132	NOT TO SCALE	Rev	Date	Notes on Revision