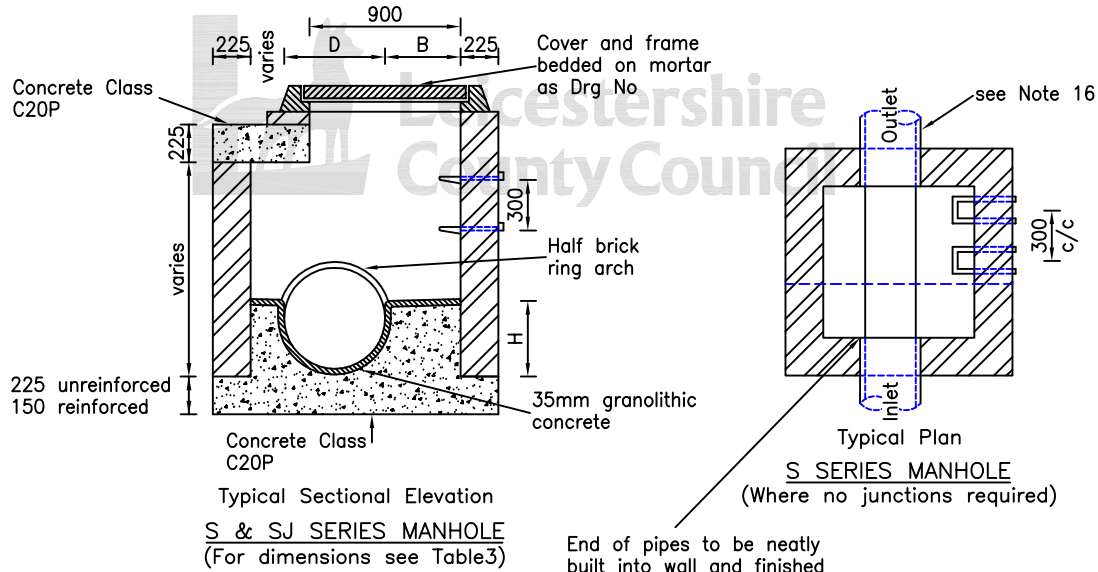


TYPICAL DETAILS OF BRICK MANHOLES TYPE S AND SJ

NOTES:
1. For Notes see Drg No SD/5/18.

Not to be used on drainage schemes intended for adoption by a Water Authority

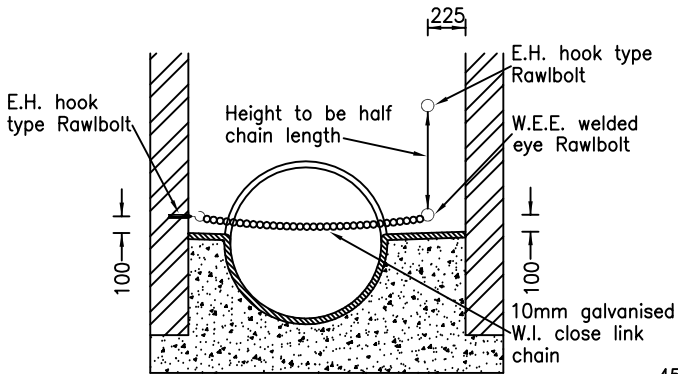


End of pipes to be neatly built into wall and finished flush with Class 1 mortar to Clause 2404

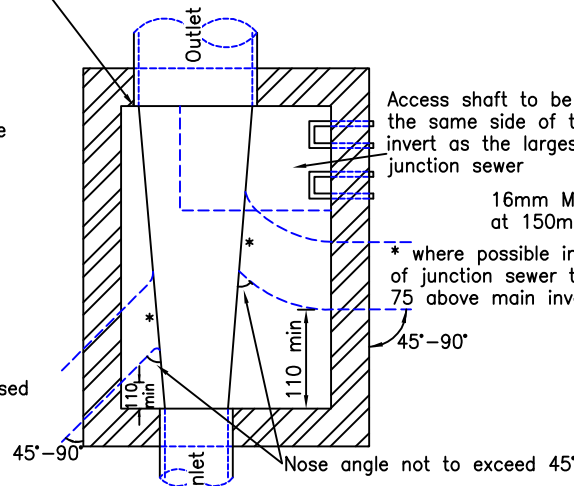
TABLE 3 - S & SJ BRICK MANHOLES

MH Type	Chamber dimensions internal		Outlet Pipe dia mm	Benching dimensions		Range of depths to invert	
	Length	Width		H mm	B mm (min)	Min	Max
S900	900	900	100	100	350	775	1.400
			150	150		825	1.450
			225	225		900	1.525
			300	300		975	1.600
SJ900	1600	900	375	375	1.050	1.675	
			450	450	1.125	1.750	
S1250	900	1250	525	450	450	1.125	1.775
SJ1250	1800	1250	600	450		1.125	1.775
			675	450		1.200	1.775
S1600	900	1600	750*	500		1.275	1.825
SJ1600	2050	1600	825*	550	1.350	1.875	
			900*	600	1.425	1.925	
			975*	650	1.500	1.975	

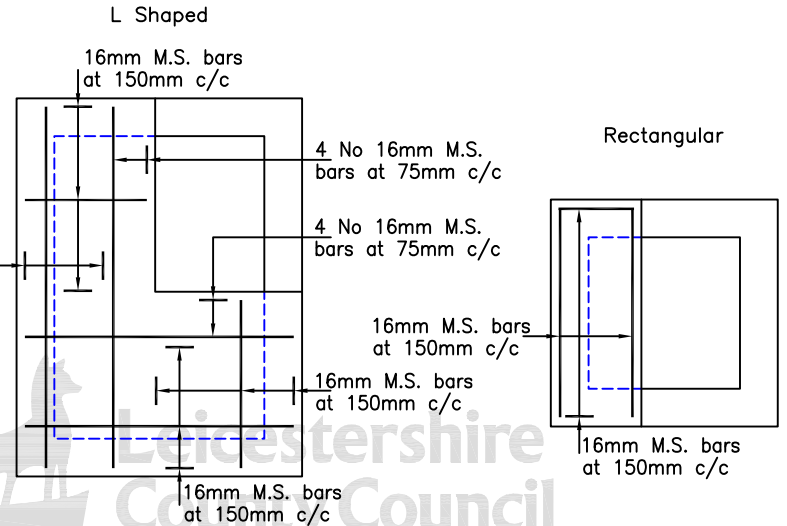
* Safety chain to be fitted across outlet pipe



FIXING OF SAFETY CHAIN



Typical Plan
SJ SERIES MANHOLE
(Where junctions required)



DETAIL OF REINFORCEMENT
(All steel in bottom of slab with 40mm minimum cover)

©Crown copyright 2007. All rights reserved. Use of this image is limited to viewing on-line and printing one copy. Leicestershire County Council. 100019271.