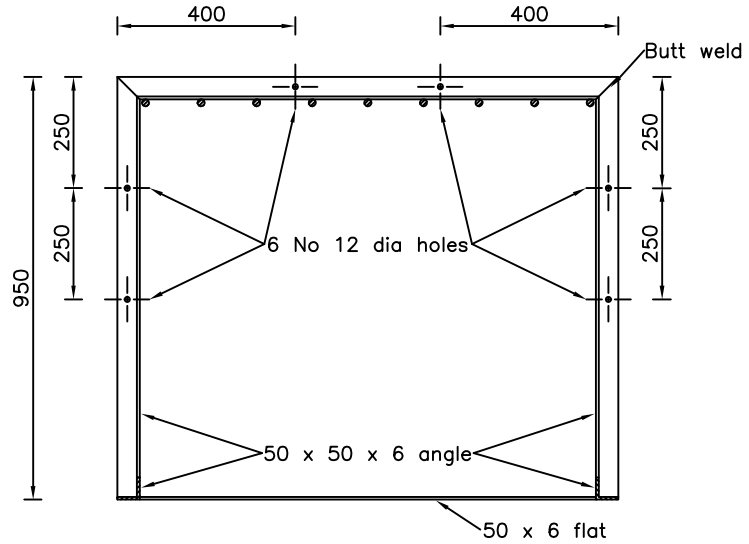
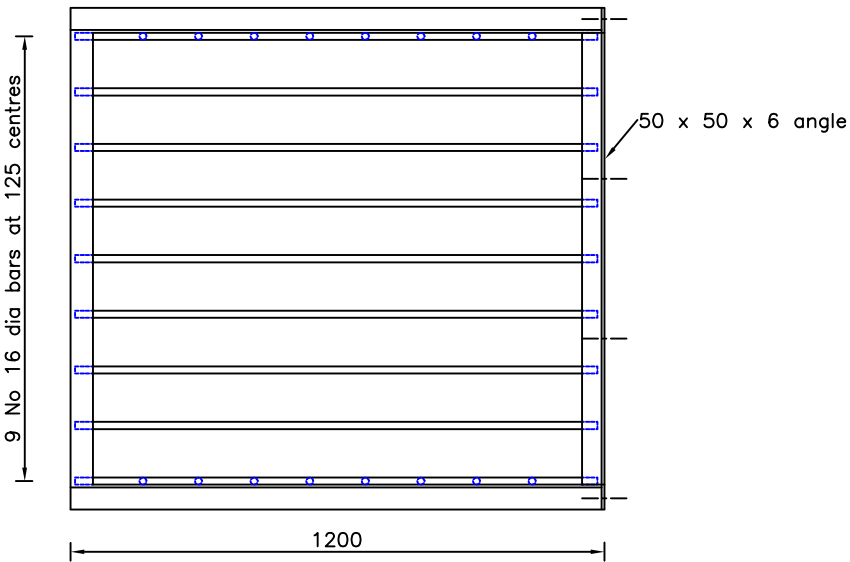


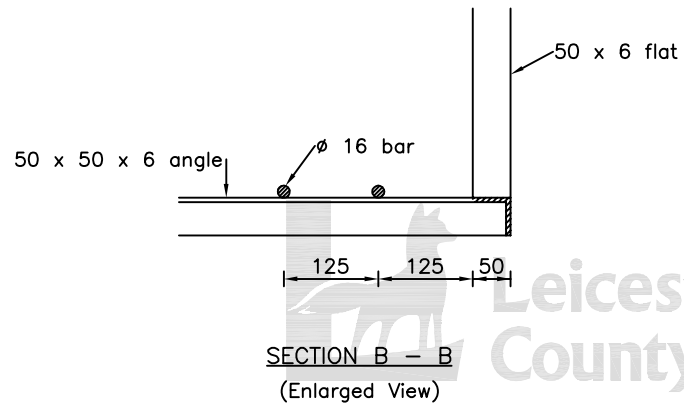
ELEVATION



SECTION A - A



PLAN



SECTION B - B
(Enlarged View)

NOTES:

1. All dimensions are in millimetres unless otherwise stated.
2. All steelwork to be galvanised in accordance with BS 729 Part 1 at 0.628kg zinc per sq m.
3. 6mm continuous fillet welds at all connections unless butt weld is specified.
4. Grille to be fixed to headwall using 6 no. M8 expanding loose bolt, zinc plated (rawlbolt type).
5. The grille shown can be used for pipes up to 750mm diameter. For larger pipes and box culverts, dimensions should be increased to suit the required size keeping bar spacings at 125mm centres.

DRAWING NUMBER	DATE			
SD/5/29	SEPTEMBER 2002			
AUTOCAD REF	SCALE			
K:\GENERAL\ID9997\STDDRG\SD529	NOT TO SCALE	Rev	Date	Notes on Revision