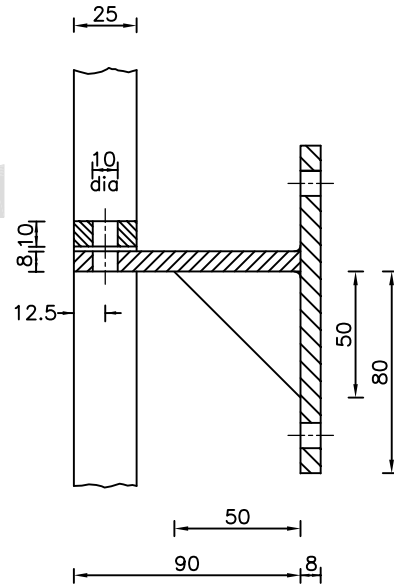
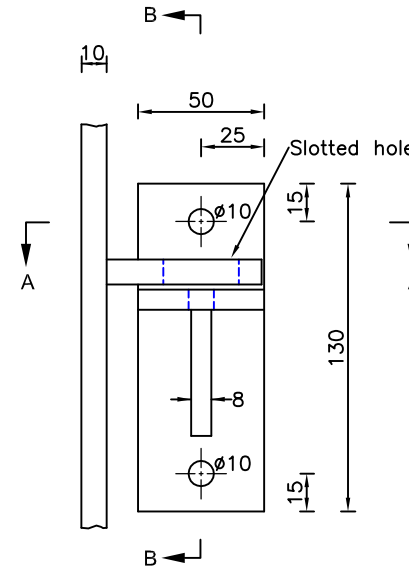


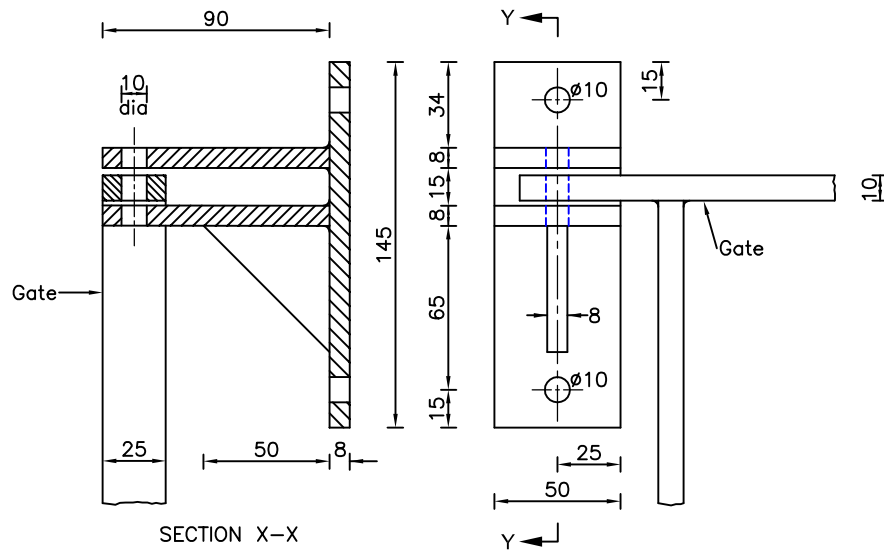
GRILLE ELEVATION



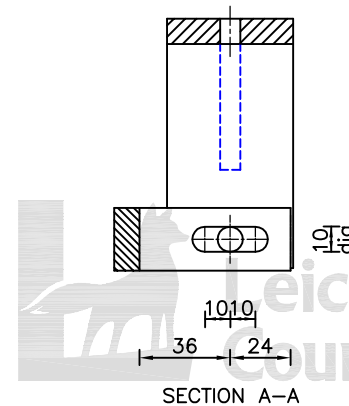
SECTION B-B



LOCKING PLATE DETAIL



HINGE DETAIL



SECTION A-A

NOTES:

- All dimensions are in millimetres unless otherwise stated.
- All steelwork to be galvanised in accordance with BS 729 Part 1 at 0.628kg zinc per sq m.
- 6mm continuous fillet welds at all connections.
- 3 no 8mm diameter stainless steel bolts to be used at hinges and locking plate and held with 'nylock' type hexagonal nuts.
- Grille to be fixed to headwall using 6 no. M8 expanding loose bolt, zinc plated (rawlbolt type).
- Grille is to be fixed centrally over pipe.
- The grille shown can be used for pipe diameters of 450mm to 675mm. For larger pipes the grille size can be increased with additional 16mm diameter vertical bars as per the table below:-

PIPE DIA mm	GRILLE SIZE mm	NUMBER OF VERTICAL BARS
450- 675	758x 758	4
750- 825	908x 908	5
900- 975	1058x1058	6
1050-1125	1208x1208	7