

# INCLUSION SERVICE

---

FRANCES SHELBOURNE

INCLUSION PATHWAY MANAGER

# CORE OBJECTIVES

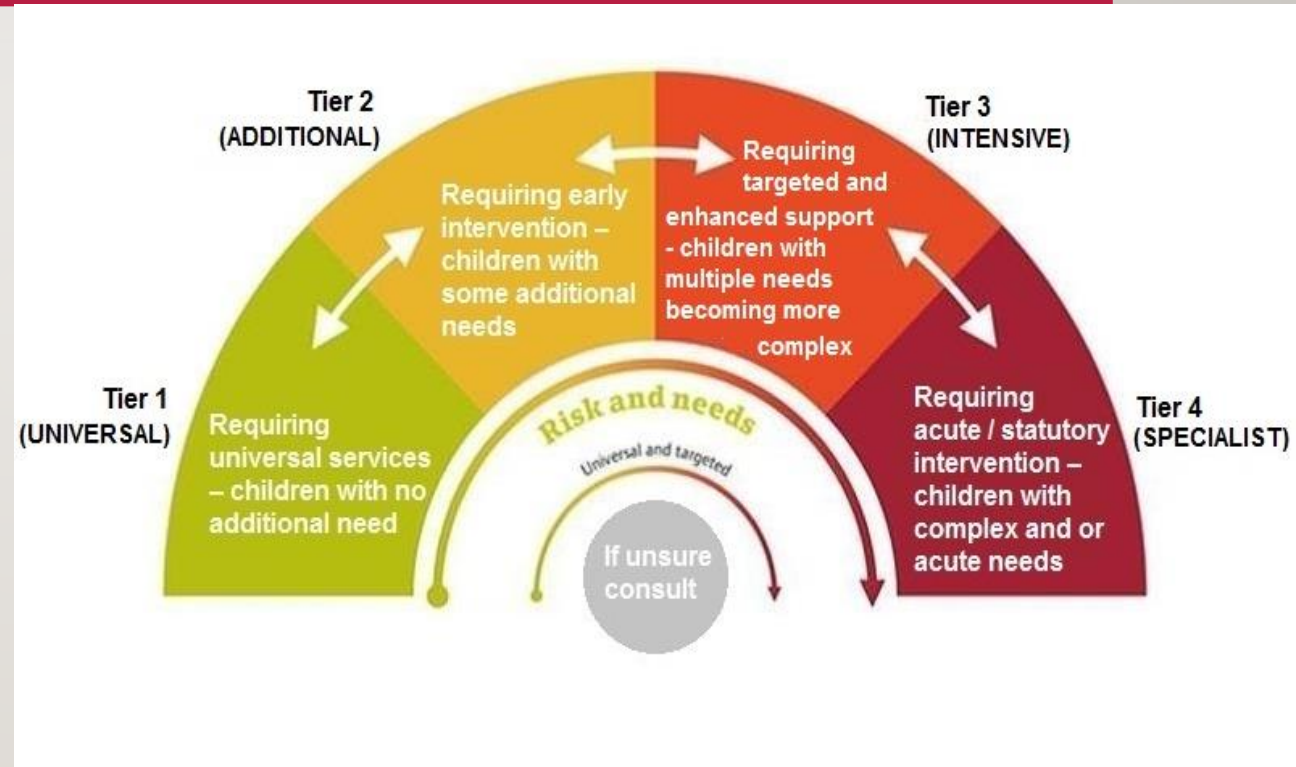
---

- Liaising with schools and other services to leverage support for vulnerable groups
- Identifying and addressing gaps in provision
- Provide advice and access to educational options for children and young people who are disengaged from education or training and employment
- Provide advice and guidance to schools, families and other services with regards to legislation around CME/CMN/EHE/NEET/PME/SEND and Exclusions.
- Support SMART assessments and reviews that enable good outcomes for children and young people
- Making robust decisions about the allocation of provision
- Respond to statutory obligations / reporting of data to inform DfE and service delivery.

# WORKING TO PREVENT ESCALATION OF NEED

## Monitoring Early Intervention

- Based on the window screen of need there are 4 levels of support. We aim to identify and put support in place at Tiers 1 and 2 through a graded or graduated response
- Monitoring activity that supports de-escalation aims to show the impact of how this work supports children and young people at the earliest point



# WORKING TO PREVENT ESCALATION OF NEED

## Tier 1-2

---

- Early and Prevent Services 0-19
  - Early Years
  - Oakfield Short Stay
  - SEIPs
  - Inclusion Service
- Offers
  - Self help through a website currently in the early stages of development
  - Telephone and email enquiries
  - Inclusion Forums offer multi-agency advice and access to further support/resources
  - In school support and resource – Graduated Responders, Service Support, Short Term Funding

# Inclusion Pathway

